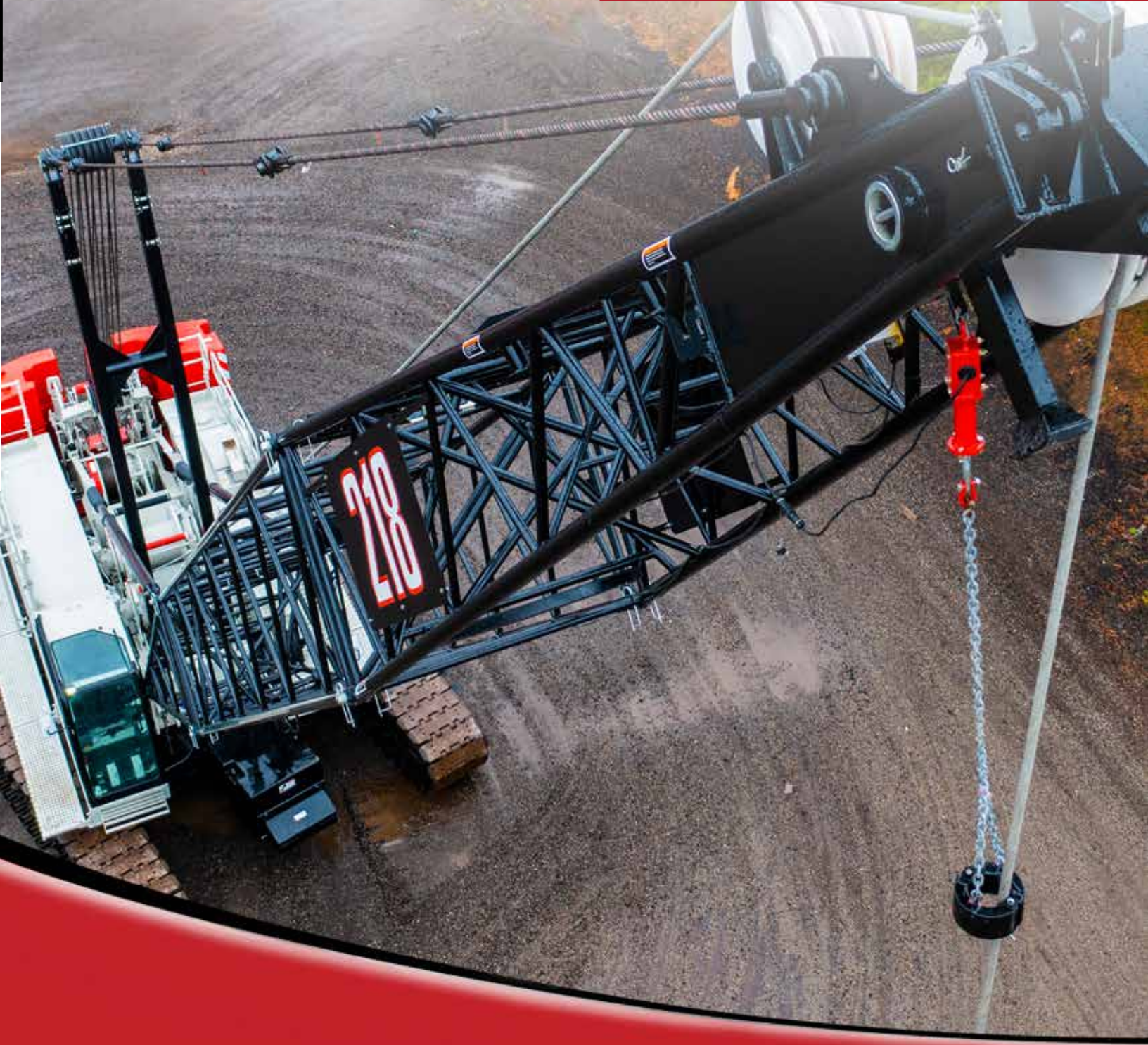




# 218|V

110-ton (99.97 mt) Lattice Boom Crawler Crane



# 218|V

110 ton (99.97 mt) Lattice Boom Crawler Crane

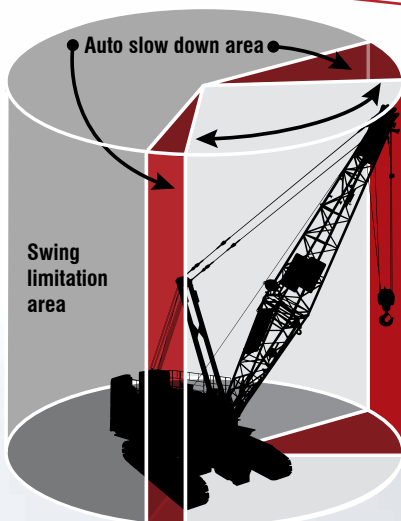
## Heavy-duty power for the most demanding jobs

- **Robust engine with total horsepower control** provides unbeatable line speeds under load.
- **Multi-disk wet brakes for smooth load control.** Virtually no friction drag from the planetary. Thousands of hours of operation expected without maintenance or adjustment.
- **High travel torque. Outstanding pick and carry capacities.**
- **Six pump main hydraulic package** provides smooth performance.
- Up to 5° list chart

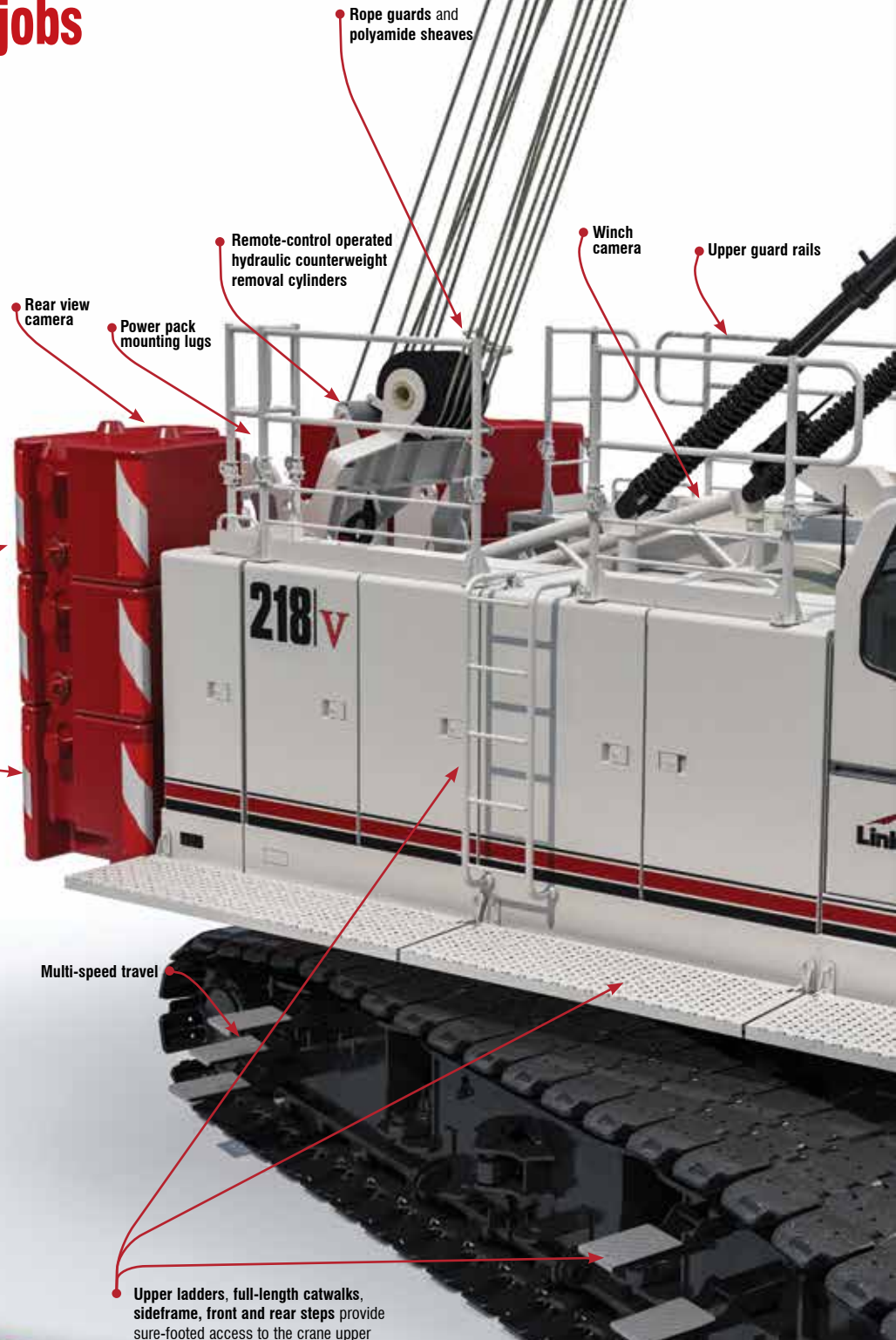
### Options include:

- **Third drum features controlled free spooling capability for pile driving applications** or power up/down as auxiliary hoist line.
- **Rear mount fourth drum** — identical in to main and auxiliary winches.
- **360° Light Package** including right, left, rear lights and a remote control floodlight on the base section

• **Counterweight biscuit design** allows for various configuration options and easy transport



Virtual Wall Auto Stop

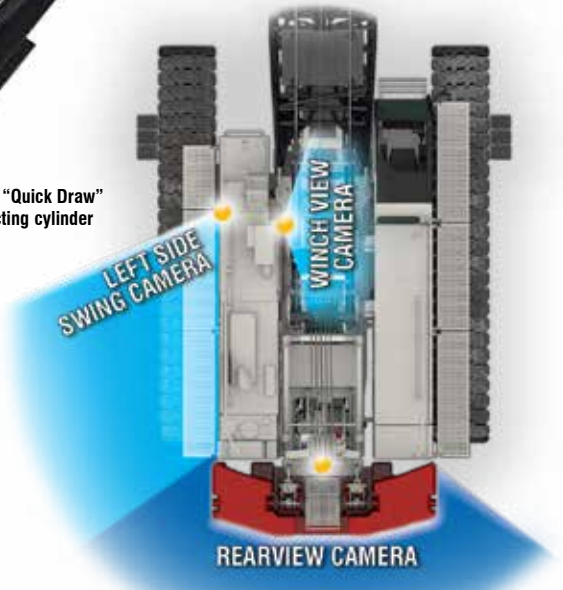


Greaseless sheaves on live mast

Two connection points on boom. One set of lugs are for cantilevering boom. Second set is for self assembling machine.

Third drum fleeting sheave pin-on

Optional "Quick Draw" self-erecting cylinder



## Vision package-Standard

Link-Belt offers the most comprehensive job site visibility package on the market. The 218|v features left side swing camera, rear view camera, and winch view camera. All feeding to a full color 7" display in the operator's cab.

Swing camera

Full contact 36" track shoe design for maximum contact area to minimizes ground bearing pressure

(2) 15,101 lbs (6850 kg) hook and pin-mounted car body counterweights narrow design allows to work in any track gauge

Optional front and rear tool box

Completely sealed lower, sealed (oil-filled) track rollers, and drive planetaries and compact hydrostatic drives add up to outstanding reliability and near-maintenance-free operation.

Link-Belt



Excellent access for all routine engine and hydraulic maintenance



## Robust engine with total horse power control

- Cummins QSB 6.7L Stage V engine
- Smooth, quite efficient clean power with total horsepower control provides unmatched line speeds under loads, as well as multi function ability
- Auto Idle/Stop for improved fuel economy

## Versatile winch package

- Matched front & rear drum performance with 44,565 lbs (20 214 kg) line pull and 228 fpm (69.m/m)
- 26 mm rope on front and rear hoists with pawl lock, grooved lagging and 2 operating modes
- Power up power down with automatic brake
- Free fall with Link-Belts exclusive “wet brake design” provides best “feel” and control of any wet brake design along with smooth performance including cycle-type work and pile driving.
- Eco Winch mode- work in high-speed, low RPM, with light loads while reducing fuel consumption.



Standard fold down upper hand rails



## Highly functional and comfortable cab

### Outstanding standard features

- **NEW capacity limiter** with high visibility color graphic touch screen display
- **Live** groundbearing pressure
- List & trim indicator
- Counterweight sensing
- **All operator alarm** with function kick-out

- **Wide, uncluttered entry**
- **18,000 BTU** air-conditioning
- **19,000 BTU** hot water heating
- **Six-way adjustable seat**
- **Adjustable armrest console** with pilot-operated single-axis controls
- **Hydraulic pilot controls** for **variable hoist**, swing and travel performance
- **Variable hydraulic output from main pumps** controlled by variable hand throttle for infinite control
- **Low-effort hydraulic pedals** with minimal range of motion can remain latched for power up/down operation
- **Full function rated capacity limiter** monitored by load sensing via boom hoist mounted load cell
- **Ergonomic winch** free fall-brake pedal
- **Night vision camera system** with full color display
- **Operator selectable idle engine shut off**
- **Foot operated swing brake**

**Variable hand throttle** for infinite main pump control.



**Pilot-operated armchair** controls

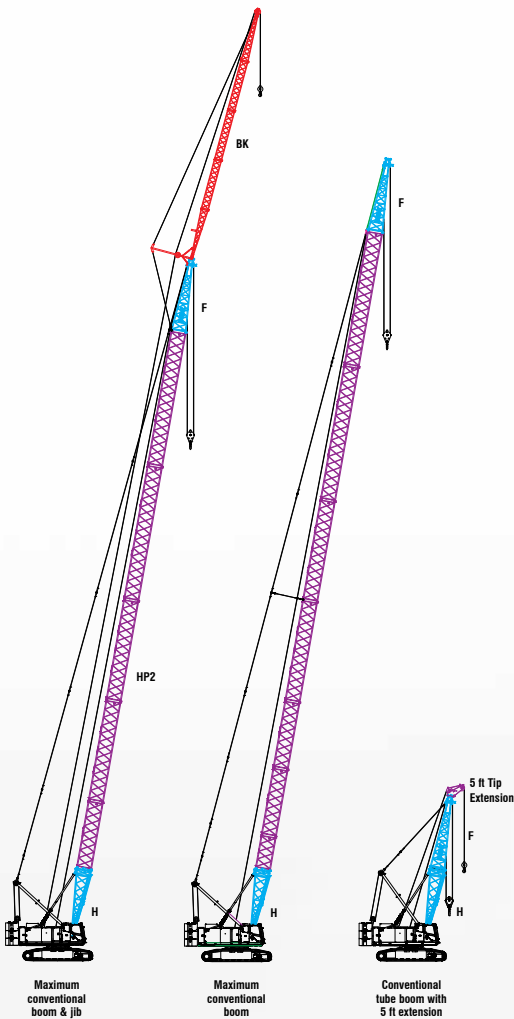


**Integrated digital climate control** with 5 speed fan



**Hydraulic flow volume** for precise control





## 218|v HSL attachments are versatile and strong

### Heavy-duty tube boom

- 40 - 230 ft (12.2 - 70.1 m) heavy-duty tubular boom
- Heavy-duty quick reeve boom tip
- Maximum tip height of tube boom + jib: 278.6 ft (84.92 m)

### Fixed jib

- 30 - 75 ft (9.14 - 22.86 m) fixed jib
- Offset angles at 5°, 15° and 25°
- Max. Combination (200 + 75 ft)

### Auxiliary 5' tip extension

- Designed to use in place of jib to provide clearance between working hoist lines
- Maximum capacity is 18.5 tons (16.78 mt)

### Optional "Quick Draw"

Quick draw single hydraulic cylinder mounted in boom base section is used for self-assembly and disassembly — no need for a helper crane or special rigging block — includes lifting sling



New open throat quick reeve top section

The boom top section features **heavy duty polyamide sheaves**, **quick reeve rope guards**, and standard **pin-on points** for attachment of options such as a fixed jib, tip extension and adapters for universal pile driving leads. **Narrow head machinery** allows pendants to rest on top of boom extensions.

**In-line boom suspension load cell**, standard with anti-two block system for both front and rear drum.

**Optional pile driving lead adapter**, **extended head shaft for hanging leads**, **three sheave idler to separate load lines**

**Double tapered connecting pins** allow installation/removal from outside of boom. Boom connecting pins store in pin catchers for transport.



New pendant storage on every section of boom



Button-style rope termination-standard



## Transportability & assembly

- Transports with crawlers, rope and base — 99,960 lbs (45 341 kg)
- Transports in 5 loads total
- 7-piece counterweight system is designed for easy handling and blended load-outs
- Innovative counterweight removal system — hydraulic counterweight cylinders remain with counterweight to reduce base machine transport weight
- Counterweight removal remote control provides optimal viewing of counterweight assembly/disassembly
- Pendants can be stowed on boom extensions for transport
- Axle extenders fold in for transport
- Standard left and right catwalks easily fold up for transport



Counterweights lower completely to the ground



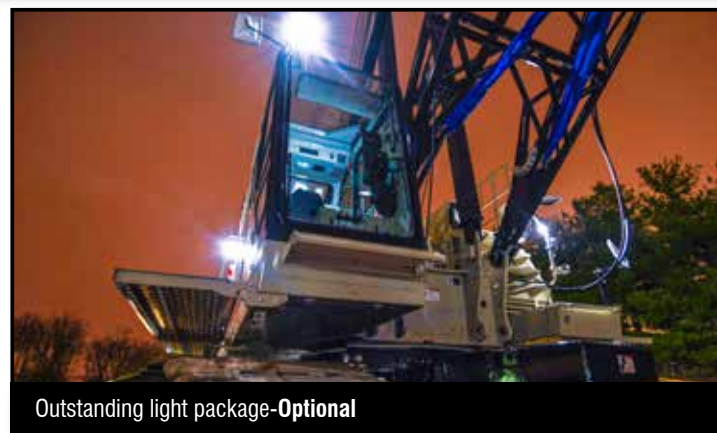
Counterweight removal remote control



## Telematics. You own the data!

Cellular-based data logging and monitoring system that provides:

- Viewing options for sharing data with distributor and Link-Belt
- Location and operational settings
- Monitor routine maintenance intervals
- Crane and engine monitoring
- Diagnostic and fault codes



Outstanding light package-Optional



**Your crane investment is always protected...  
with your Link-Belt distributor.**

When you invest in a Link-Belt crane, you invest in a legacy of outstanding customer support dating back to 1874.

The ultimate value of a machine begins with state-of-the-art design and quality manufacturing, but it is the excellent Link-Belt distributor product support that determines its long term value. This philosophy has earned Link-Belt cranes the enviable position of traditionally commanding some of the highest resale prices in the industry.

“... to be recognized as a leader in customer service & satisfaction.”  
— The Link-Belt Vision

**Link-Belt Preferred**

**As a member of Link-Belt Cranes user’s group, you will have access to:**

- A comprehensive online library of parts, service & operator manuals for YOUR crane
- Interactive, live groundbearing calculations for YOUR crane
- Online access to recommended spare parts lists, filter, lube and key lists plus maintenance information and more
- No annual fee or charges to access your crane information
- Factory-trained distributor support
- Experienced factory technicians
- 24/7 parts distribution with 95% availability
- Factory parts customer service reps
- Link-Belt certified structural repair
- Boom inspection
- 3D lift planning
- Plus a vast array of information on new products, services and special offerings

**Online 3D LIFT PLANNING**

- Web-based, active 3D, high graphic
- User-friendly, no CAD program required
- Always current, no updates required
- Print actual lift

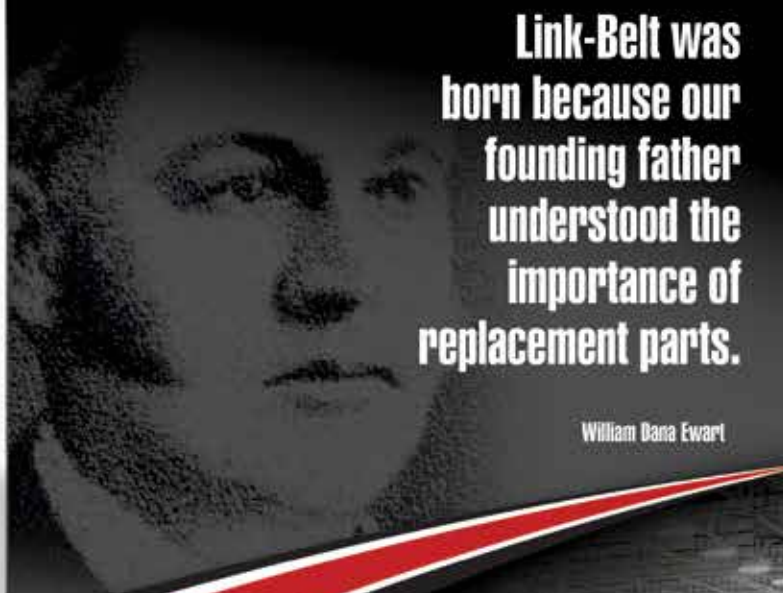
**Online GROUNDBEARING PRESSURES**

- Dynamic specific machine model pantoon loadings
- Graphically illustrated in 360° numerical presentation
- Print out

Link-Belt Construction Equipment Company is a leader in the design, manufacture and sales of telescopic and lattice boom cranes with headquarters and manufacturing facilities in Lexington, Kentucky, USA. Link-Belt is committed to the manufacture and service of high quality products that satisfy customers worldwide

Towards that end, Link-Belt has pursued a strategy of growth and investment. It has moved aggressively to seize more global market share by producing a broader range of products and strengthening distribution and personnel around the globe.

Link-Belt is also home to a family of passionate professionals with a legacy of innovation and cutting-edge technology spanning over 140 years. These professionals, in a 815,000 sq. ft. (75 716 m<sup>2</sup>) manufacturing facility and with a culture of continuous innovation, have pushed Link-Belt to be the most modern crane manufacturer in North America.



**Link-Belt was born because our founding father understood the importance of replacement parts.**

William Dana Ewart

**Building on that principal, 140 years later...**

- Trained technical specialists
- Faster and more efficient customer service
- State-of-the-art computer information systems
- 24 hours a day, 7 days a week
- 130,000 Sq. Ft. Parts Distribution Center
- All parts in stock ship the same business day



©Link-Belt is a registered trademark. Copyright 2023  
All rights reserved. We reserve the right to change designs and specifications at any time. Litho in U.S.A.  
2/23 4327 #4600