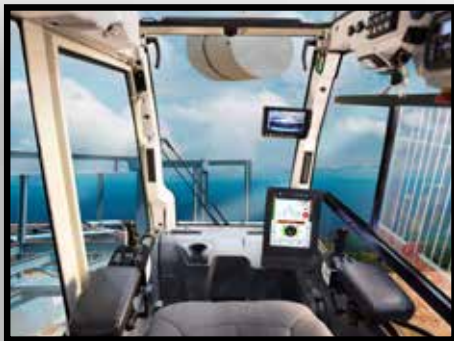


Take control with Link-Belt Pulse 2.0 RCL system and V-CALC



- 10" full color touch screen display
- NEW Auto-Level
- Telematics
- WiFi enabled for software updates
- 81 outrigger combinations
- Integrated RCL
- Incorporated swing arrest
- Real-time 360° Charts



- New Larger Operator's Seat w/ Joystick or Single Axis Controls
- Improved HVAC with Automatic Temperature Control
- Optimized Visibility
- 20° Cab Tilt
- 10" Pulse 2.0 Display: Touchscreen and Color
- Link-Belt Vision Package: 7" In-Cab Display
 - Right side swing
 - Main and auxiliary winch

120|TT

110 mt | 120-ton Truck Terrain Crane

Remarkable control, reliability and capacity performance

- ✓ 11.7 - 50 m | 38.3' - 164.1' SIX SECTION PIN & LATCH BOOM
- ✓ MULTIPLE SMARTFLY OPTIONS:
 - 2-PIECE 10.7-17.7 m | 35'-58' OFFSETTABLE SMARTFLY
 - 3-PIECE 3.0-10.7-17.7 | 9.5'-35'-58' OFFSETTABLE SMARTFLY
- ✓ TWO 4.9 m | 16' LATTICE BOOM EXTENSION
- ✓ 79.7 m | 262' MAXIMUM TIP HEIGHT
- ✓ 6 BOOM EXTEND MODES TO MAXIMIZE LIFTING PERFORMANCE
- ✓ LINK-BELT PULSE 2.0 – TOTAL CRANE OPERATING SYSTEM WITH V-CALC AND TELEMATICS
- ✓ FULL LED LIGHTING PACKAGE WITH 4 ON-BOARD CAMERAS
- ✓ TRANSPORTS AT UNDER 40 662 KG | 90,000 LBS WELL EQUIPPED WITHOUT COUNTERWEIGHT
- ✓ NEW: **SMART-STACK COUNTERWEIGHT MONITORING SYSTEM**



Link-Belt[®]

C R A N E S

Lexington, Kentucky | www.linkbelt.com

120|TT

110 mt | 120-ton
Truck Terrain Crane

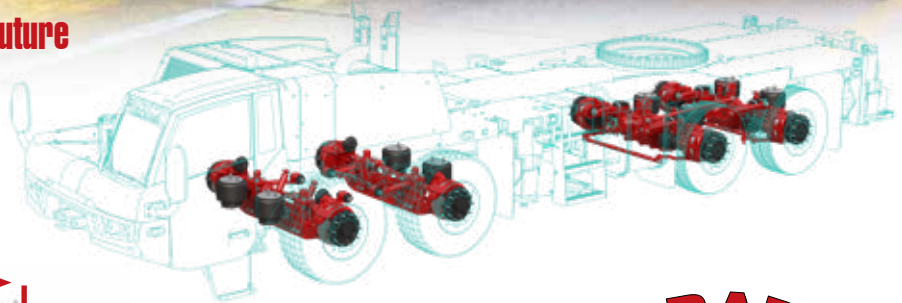
All New Carrier Cab

- NEW Wider Carrier Cab: 9" Wider than current truck crane cab.
- "Smart Seat" Memory Suspension System with Dual Position Lumbar Support
- TPMS – Wireless Tire Pressure and Temperature Monitoring
- Integrated Pulse 2.0 and Camera views in one 7.5" Touch Screen Display

Link-Belt Truck Crane Chassis of the Future

An Industry First suspension and axle configuration:

- All new air-ride suspension and Air disc brakes
- No traditional Walking/Bogie Beam Suspension: Reduces Weight and Improves Ride Quality
- Turning radius from centerline of tires 7.7 m (26' 10")

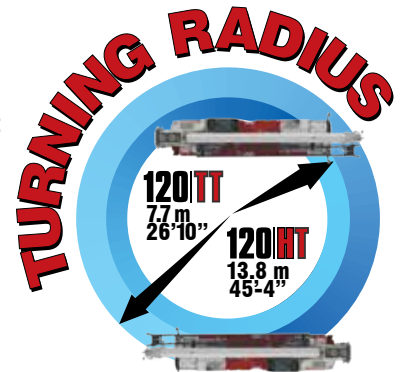


Attachment Options:

- 2 piece 10.7-17.7 m | 35'-58' Link-Belt SmartFly: Lightweight simple one-person operation

NEW for the 120|TT

- 3 piece SmartFly option: Integrated 3.0 m | 9.5' for heavy lift or 2 load line lift applications



Transport configurations adaptable to any location

Transport under 40,825 kg without counterweights



Maximum GAWR on 4 Axles 46,450 kg with 3.6 mt counterweight payload



Link-Belt

C R A N E S

Lexington, Kentucky | www.linkbelt.com

© Link-Belt is a registered trademark. Copyright 2022. All rights reserved.
We reserve the right to change designs and specifications at any time.
Litho in U.S.A. 4224 7/22 #4595