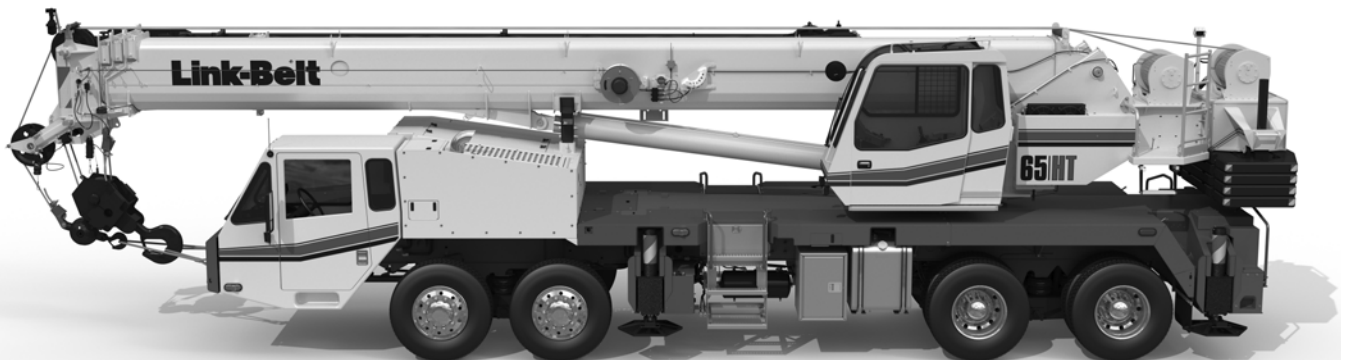


Technical Data

Specifications & Capacities

65HT

Telescopic Boom Truck Crane
65 US ton
55 metric ton



CAUTION: This material is supplied for reference use only. Operator must refer to in-cab Crane Rating Manual and Operator's Manual to determine allowable crane lifting capacities and assembly and operating procedures.

Table Of Contents

Boom, Attachments, and Upper Structure	1
Boom	1
Boom Head	1
Boom Elevation	1
Auxiliary Lifting Sheave – Optional	1
Hook Blocks and Balls – Optional	1
Fly – Optional	1
Upper Operator’s Cab and Controls	1
Swing	2
Electrical	2
Load Hoist System	3
Load Hoist Performance	3
2M Main and Optional Auxiliary Winches	3
Hydraulic System	3
Counterweight	3
Carrier	4
General	4
Outriggers	4
Steering and Axles	4
Suspension	4
Tires and Wheels	4
Brakes	4
Electrical	4
Engine	4
Transmission	5
Carrier Speeds and Gradeability	5
Fuel Tank	5
Hydraulic System	5
Pump Drive	5
Lower Cab and Controls	6
Additional Equipment	6
Axle Loads	7
General Dimensions	8
EPA 2021	8
Working Range Diagram	9
Boom Extend Modes	10

Main Boom Lift Capacity Charts – Standard	11
11,500 lb Counterweight – Fully Extended Outriggers – 360° Rotation	11
Main Boom Lift Capacity Charts – Optional	12
15,100 lb Counterweight – Fully Extended Outriggers – 360° Rotation	12
Main Boom Lift Capacity Charts – Optional	13
18,700 lb Counterweight – Fully Extended Outriggers – 360° Rotation	13
Fly Attachment Lift Capacity Charts – Optional	14
11,500 lb Counterweight – Fully Extended Outriggers – 360° Rotation	14
115 ft Main Boom Length 2° Fly Offset	14
115 ft Main Boom Length 20° Fly Offset	14
115 ft Main Boom Length 40° Fly Offset	14
15,100 lb Counterweight – Fully Extended Outriggers – 360° Rotation	15
115 ft Main Boom Length 2° Fly Offset	15
115 ft Main Boom Length 20° Fly Offset	15
115 ft Main Boom Length 40° Fly Offset	15
18,700 lb Counterweight – Fully Extended Outriggers – 360° Rotation	16
115 ft Main Boom Length 2° Fly Offset	16
115 ft Main Boom Length 20° Fly Offset	16
115 ft Main Boom Length 40° Fly Offset	16

Boom, Attachments, and Upper Structure

■ Boom

Design – Four section, formed construction of extra high tensile steel consisting of one base section and three telescoping sections.

Boom

- 36.75–115 ft (11.2–35m) four-section full power boom
- Two mode boom extension: In mode EM1, the T1, T2, and T3 sections extend and retract synchronously to a maximum of 115.0' boom length. In mode EM2, only the T1 section extends to reach a 62.8' boom length. The T2 and T3 sections do not extend and will stay retracted inside the T1 section.
- Mechanical boom angle indicator
- Maximum tip height for EM2 mode is 71 ft (21.5m) and EM1 is 122 ft (37m).

Boom Head

- Four 16.5 in (41.9cm) root diameter nylon sheaves to handle up to eight parts of line
- Easily removable wire rope guards
- Rope dead end lugs on each side of the boom head
- Boom head is designed for quick-reeve of the hook block

Boom Elevation

- One double acting hydraulic cylinder with integral holding valve
- Boom elevation: -2.5° to 78°

Auxiliary Lifting Sheave – Optional

- Single 16.5 in (41.9m) root diameter nylon sheave
- Easily removable wire rope guards
- Does not affect erection of the fly or use of the main head sheaves

Hook Blocks and Balls – Optional

- 8 ton (7.2mt) swivel hook ball with safety latch
- 41 ton (37mt) 3 sheave hook block with safety latch
- 60 ton (55mt) 5 sheave hook block with safety latch

Fly – Optional

- 28.5 ft (8.7m) one piece lattice fly, stowable, offsettable to 2° , 20° , and 40° . Maximum tip height is 149 ft (45.5m).
- 28.5–51 ft (8.7–15.5m) two piece bi-fold lattice fly, stowable, offsettable to 2° , 20° and 40° . Maximum tip height is 171 ft (52.2m).

■ Upper Operator's Cab and Controls

Environmental Cab – Fully enclosed, one person cab of galvalume steel structure with acoustical insulation. Equipped with:

- Tinted and tempered glass windows
- Extra-large fixed front window with windshield wiper and washer
- Swing up roof window with windshield wiper and washer
- Sliding left side door with large fixed window
- Sliding rear and right side windows for ventilation
- Six way adjustable, cushioned seat with seat belt and storage compartment
- Diesel fired warm-water heater with air ducts for front windshield defroster and cab floor
- Defroster fan for the front window
- Bubble level
- Circulating fan
- Adjustable sun visor
- LED Dome light
- Cup holder
- Fire extinguisher
- Left side viewing mirror
- Pull-out cabwalk
- Two position travel swing lock
- AM/FM Radio

Air Conditioning – Optional – Integral with cab heating system utilizing the same ventilation outlets

Armrest Controls – Two dual axis hydraulic joystick controllers or optional single axis hydraulic controllers for:

- Swing
- Boom hoist
- Main rear winch
- Auxiliary front winch – optional
- Drum rotation indication
- Drum rotation indicator activation switch
- Swing park brake switch
- Winch high/low speed and disable switch(es)
- Telescope override switch
- Warning horn button
- Pump enable
- Heating controls
- Air conditioning – optional
- Engine throttle

Outrigger Controls – Hand held control box with umbilical cord gives the operator the freedom to view operation while setting the outriggers.

Foot Controls

- Boom telescope
- Swing brake
- Engine throttle

Right Front Console – Controls and indicators for:

- Engine ignition
- Function disable
- Front windshield wiper and washer
- Cab floodlights
- Warning horn
- Console dimmer switch
- Bubble level
- 12 volt power connection
- Boom floodlight – optional
- Rotating beacon or strobe light switch – optional
- Third wrap selector switch – optional

Camera Display – Located on dash console

- Displays right side of upper
- Displays main and auxiliary winches

Cab Instrumentation – Ergonomically positioned LCD display, CANBUS instrumentation for crane operation including:

- Tachometer
- Engine water temperature
- Fuel level
- Hydraulic oil temperature
- Stop engine
- Check engine
- Diesel exhaust fluid
- Regeneration disabled light (EPA 2021 engine only)
- DPF regeneration light (EPA 2021 engine only)
- High exhaust temperature light (EPA 2021 engine only)
- Malfunction indicator lamp (EPA 2021 engine only)
- Engine oil pressure
- Swing park brake light
- Battery voltage
- Fuel rate (gal/hr)
- Engine load
- Engine Diagnostics
- Third wrap indicator

Link-Belt Pulse – The Link-Belt in-house designed, total crane operating system that utilizes the display as a readout and operator interface for the following systems:

- **Rated capacity limiter** – LCD graphic audio – visual warning system integrated into the dash with anti – two block and function limiter. Operating data includes:
 - Crane configuration
 - Boom length and angle
 - Boom head height
 - Allowed load and % of allowed load
 - RCL light bar
 - Boom angle
 - Radius of load
 - Actual load
 - Wind speed
 - Highlighted unit of measurement on working screen
 - Telescope operation displayed in real time
 - Diagnostics
 - Operator settable alarms (include):
 - Maximum and minimum boom angles
 - Maximum tip height
 - Maximum boom length
 - Swing left/right positions
 - Operator defined area (imaginary plane)
- **Telematics** – Cellular–based data logging and monitoring system that provides:
 - Location and operational settings
 - Routine maintenance
 - Crane and engine monitoring
 - Diagnostic and fault codes

Integrated Third Wrap Indicator – Optional – Link–Belt Pulse color display visually and audibly warns the operator when the wire rope is on the first/bottom layer and when the wire rope is down to the last three wraps.

Integrated Third Wrap Function Kickout – Optional – Link–Belt Pulse color display visually and audibly warns the operator when the wire rope is on the first/bottom layer and provides a function kickout when the wire rope is down to the last three wraps.

Internal RCL Light Bar – Visually informs the operator when crane is approaching maximum load capacity with a series of green, yellow, and red lights.

External RCL Light Bar – Optional – Visually informs the ground crew when crane is approaching maximum load capacity with a series of green, yellow, and red lights.

■ Swing

Motor/Planetary – Bi–directional hydraulic swing motor mounted to a planetary reducer for 360° continuous smooth swing at 2.5 rpm.

Swing Park Brake – 360°, electric over hydraulic, (spring applied/hydraulic released) multi–disc brake mounted on the speed reducer. Operated by a switch from the operator’s cab.

Swing Brake – 360°, foot operated, hydraulic applied disc brake mounted to the speed reducer.

Swing Lock – Two–position swing lock (boom over front or rear) operated from the operator’s cab.

360° Positive Swing Lock – Optional – Meets New York City requirement.

■ Electrical

Swing Alarm – Audio warning device signals when the upper is swinging.

Lights

- Two LED working lights on front of the cab
- One LED working light on the top of the cab – optional
- One amber strobe beacon on top of the cab – optional
- Boom floodlight – Single – optional
- Boom floodlight – Dual – optional
- Boom floodlight – High intensity remote controlled – optional

Load Hoist System Load Hoist Performance

Main (Rear) and Auxiliary (Front) Winches — 5/8 in (16mm) Rope										
Layer	Maximum Line Pull		Low Line Speed		High Line Speed		Layer		Total	
	lb	kN	ft/min	m/min	ft/min	m/min	ft	m	ft	m
1	15,822	70.65	159	485	302	92.0	99	30.2	99	30.2
2	14,366	63.90	176	53.6	334	101.8	110	33.5	209	63.7
3	13,114	58.33	193	58.8	366	111.6	120	36.6	329	100.3
4	12,062	53.66	210	64.0	398	121.3	130	39.6	459	139.9
5	11,167	49.67	226	68.9	430	131.1	141	43.0	600	182.9
6	10,396	46.24	243	74.1	462	140.8	151	46.0	751	228.9

Wire Rope Application		Diameter		Type	Maximum Permissible Load	
		in	mm		lb	kg
Main (Rear) Winch	Standard	5/8	16	37x7 non rotating — right lang lay (Type KC)	10,835	4 914
Auxiliary (Front) Winch	Standard	5/8	16		10,835	4 914

2M Main and Optional Auxiliary Winches

- Axial piston, full and half displacement (2—speed) motors driven through planetary reduction unit for positive control under all load conditions.
- Grooved lagging
- Power up/down mode of operation
- Hoist drum cable follower — optional
- Drum rotation indicator
- Drum diameter: 10.63 in (27.0cm)
- Rope length:
 - Main: 550 ft (167.6m)
 - Auxiliary: 450 ft (137.2m) or 550 ft (167.6m)
- Terminator style socket and wedge

Hydraulic System

Counterbalance Valves — All hoist motors, boom extend cylinders, and boom hoist cylinder are equipped with counterbalance valves to provide load lowering and to prevent accidental load drop if hydraulic power is suddenly reduced.

Hydraulic Oil Cooler — Carrier mounted cooler removes heat from the hydraulic oil. Cooler is integral to the engine radiator/charge air cooler.

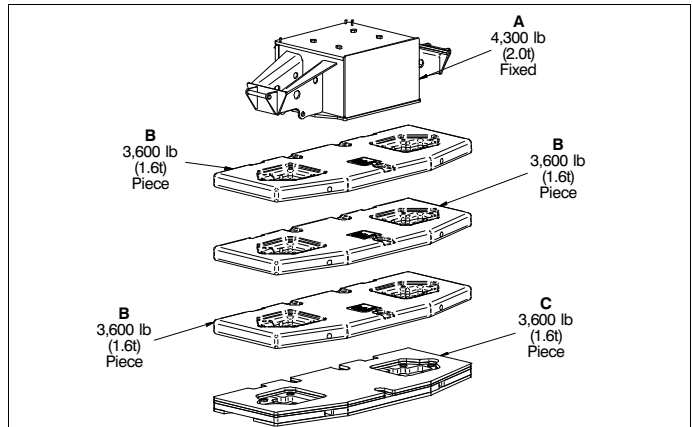
Boom Hoist Float Valves (Optional) — For transporting the boom over the rear of the crane with a boom dolly. Allows hydraulic oil within the boom hoist cylinder to flow between piston side and rod side, allowing the boom to float while on the boom dolly.

Swing Brake Release — For transporting the boom over the rear of the crane with a boom dolly. Holds the 360° swing park brake in the released position allowing free rotation of the upper structure.

Counterweight

Standard — 11,500 lb (5.2t) total counterweight consisting of two, hydraulically removable 3,600 lb (1.6t) counterweights with capacities for 4,300 lb (2.0t) and 7,900 lb (3.6t) counterweight configurations. Assembled and disassembled by hydraulic cylinders controlled from both sides of the upper structure.

Optional — 3,600 lb (1.6t) in addition to standard counterweight for a total of 15,100 lb (6.8t). Two 3,600 lb (1.6t) in addition to standard counterweight for a total of 18,700lb (8.4t).



Counterweight Packages		11,500 lb (5.2t) — Standard				
		15,100 lb (6.8t) — Optional				
		18,700 lb (8.4t) — Optional				
Counterweight Pieces		A	B	B	B	C
		4,300 lb (2t) Fixed	3,600 lb (1.6t) Piece	3,600 lb (1.6t) Piece	3,600 lb (1.6t) Piece	3,600 lb (1.6t) Piece
A	4,300 lb (2t)	X				
A,B	7,900 lb (3.6t)	X	X			
A,B,B	11,500 lb (5.2t)	X	X	X		
A,B,B,B	15,100 lb (6.8t)	X	X	X	X	
A,B,B,B,C	18,700 lb (8.4t)	X	X	X	X	X

Carrier

General

- 8 ft 6 in (2.6 m) wide
- 23 ft 10 in (7.26m) wheelbase (centerline of first axle to centerline of fourth axle)
- **Frame** – Box–type, torsion resistant, welded construction made of high tensile steel. Equipped with front and rear towing and tie–down lugs, tow connections, and access ladders.

Outriggers

Boxes – Two double box, front and rear welded to the carrier frame.

Beams and Jacks – Four single stage beams with Confined Area Lifting Capacities (CALC) provide selectable outrigger extensions of full, intermediate, and retracted positions. Jacks with integral check valve, hydraulically controlled from the operator's cab and on both sides of carrier. A fifth front bumper outrigger with integral check valve is hydraulically controlled from the operator's cab and at the front bumper of carrier.

Pontoons

- **Main** – Four lightweight, stow'n go, 23.5" x 27.25" (59.7 x 69.2cm) hexagonal steel pontoons with a contact area of 485 in² (3 129cm²) can be stored for road travel in either the storage racks on the carrier or under the outrigger boxes
- **Front Bumper** – One, lightweight, self–storing, 16" (40.6cm) diameter steel pontoon with a contact area of 201 in² (1 296cm²)

Jack Reaction

- **Main** – 76,000 lb (338.1kN) force and 157 psi (1 082.5kPa) ground bearing pressure
- **Front Bumper** – 37,000 lb (164.6kN) force and 184 psi (21 269kPa) ground bearing pressure

Steering and Axles

- Sheppard full integral master gear/slave gear steering system provides hydraulic assisted steering with mechanical link between steering wheel and wheels
- **Drive** – 8 x 4 for on/off–highway travel
- **Axle 1 & 2** – Tandem steered, non–driven
- **Axle 3 & 4** – Tandem non–steered, driven with reduction: 5.38 to 1
- **Inter–Axle Differential Lock** – Traction adding device that locks axle 3 with axle 4. Operated by a switch from the carrier cab.

Suspension

Front – Raydan Air Link walking beam air suspension

Rear – Raydan Air Link walking beam air suspension

- **Axle Lift System – Optional** – Improves rear tire ground clearance when the crane is up on outriggers. The rear air suspension can be raised or lowered with a switch in the carrier cab. The axle lift system can be controlled with a switch on both sides of the carrier.

Tires and Wheels

Front – Four (single) 425/65R22.5 tires on aluminum disc wheels

Rear – Eight (dual) 11R22.5 tires on aluminum outer/steel inner disc wheels

- Spare tires and wheels – optional
- Tire inflation kit – optional

Brakes

Service – Full air anti–lock (ABS) brakes on all wheel ends. Dual circuit compressed air system with air dryer.

Parking/Emergency – Spring loaded type, acting on 3rd and 4th axles automatically apply when air pressure drops below 40 psi (275.8kPa) in both circuits.

Electrical

Battery – Three batteries provide 12 volt starting and operation

Lights

- Front lighting includes two main daytime running/headlights, two high beam lights, two parking/directional indicators, and three cab marker lights.
- Side lighting includes three parking/directional indicators per side.
- Rear lighting includes two parking/directional indicators, two parking/brake lights, two reverse lights, three marker lights, and a license plate light.
- Other equipment includes hazard/warning system, two cab LED dome lights, instrument panel back lighting, and signal horn.
- One amber strobe beacon behind the cab.

Engine

Specification	Cummins L9
Emissions Compliance Level:	EPA 2021 ⁽¹⁾
Maximum Allowable Sulfur Content of Fuel (PPM):	15
Numbers of cylinders:	6
Cycle:	4
Bore and Stroke: inch (mm)	4.49 x 5.69 (114x144)
Piston Displacement: in ³ (L)	543 (8.9)
Max. Brake Horsepower: hp (kW)	370 (276) @ 1,700 rpm 365 (272) @ 2,100 rpm
Peak Torque: ft lb (Nm)	1,250 (1 694.7) @ 1,400 rpm
Alternator: volts – amps	12 – 145
Crankcase Capacity: qt (L)	26 (24.6)
	<ul style="list-style-type: none"> • Cruise control • Cummins ISL – Three stage compression brake • Thermostatically controlled, hydraulically driven radiator fan • 120 volt engine block heater • Grid heater starting aid standard on L9 • Engine equipped with on-board diagnostics – L9
	⁽¹⁾ Can only be sold and/or operated where EPA2021 on–highway emission standards are accepted.

■ Transmission

Automated – ZF AS-TRONIC (no clutch pedal) manual transmission with 12 forward gears and 2 reverse gears.

■ Carrier Speeds and Gradeability

ZF Astronic		Governed Speed		Gradeability (@ Peak Torque Except Creep @ Idle)	
		EPA 2021			
Gear	Ratio	mph	km/h	% Grade	
				EPA 2021	
12th	0.78	60.69	97.65	1.83	
11th	1.00	47.22	75.97	2.35	
10th	1.27	37.27	59.96	2.98	
9th	1.63	28.99	46.64	3.83	
8th	2.10	22.47	36.16	4.94	
7th	2.70	17.49	28.14	6.35	
6th	3.55	13.29	21.39	8.35	
5th	4.57	10.34	16.64	10.73	
4th	5.78	8.16	13.14	13.59	
3rd	7.44	6.35	10.22	17.47	
2nd	9.59	4.92	7.92	22.54	
1st	12.33	3.83	6.16	28.97	
Reverse 1	11.41	4.14	6.66	26.82	
Reverse 2	8.88	5.32	8.56	20.87	
Creep @ idle	2nd	9.59	1.64	2.64	26.68
	1st	12.33	1.27	2.04	34.29
	Reverse 1	11.41	1.38	2.22	31.75
	Reverse 2	8.88	1.77	2.85	24.70

Based on a gross vehicle weight of 78,000 lb (35 380kg)

■ Fuel Tank

- One 75 gal (283.9L) capacity tank
- One 10 gal (37.8L) capacity diesel exhaust fluid (DEF) plastic tank

■ Hydraulic System

All functions are hydraulically powered allowing positive, precise control with independent or simultaneous operation of all functions.

Main Pumps

- Four fixed displacement gear pumps with automatic disconnect for the main and auxiliary winches, swing, boom hoist, control circuit, and telescope for use when crane is in travel mode
- One fixed displacement gear pump for steering and the front bumper outrigger
- Two fixed displacement gear pumps for engine cooling fan and main outriggers. These pumps also provide flow to the winches and boom hoist for “pick & carry” mode. Operated by a switch in the carrier cab.
- Combined pump capacity of 167 gpm (719.2Lpm)

Hydraulic Reservoir – 144 gal (545.1L) capacity equipped with sight level gauge. Diffusers built in for deaeration.

Filtration – One 10 micron, full flow, return line filter. All oil is filtered prior to return to reservoir. Accessible for easy filter replacement.

■ Pump Drive

All pumps are mechanically driven by the diesel engine. Main and auxiliary winches, swing, boom hoist, control circuit, and telescope pumps are mounted to an automatic pump disconnect on the rear of the transmission to aid in cold weather starting as well as to reduce pump wear while traveling.

■ Lower Cab and Controls

Environmental Cab — Fully enclosed, one person cab of composite structure with acoustical insulation. Equipped with:

- Tinted and tempered glass windows
- Roll down left side window for ventilation
- Right side window
- Windshield wiper and washer
- Six way adjustable and air suspended driver's seat with seat belt
- Two adjustable rear view mirrors
- Engine dependent warm–water heater with air ducts for windshield defroster and cab floor
- Adjustable sun visor
- Two LED dome lights
- 12 volt connection
- Fire extinguisher

Air Conditioning — Integral with cab heating system utilizing the same ventilation outlets

Overhead Console — Located above the sun visor

- Document storage unit
- AM/FM Radio
- 12 volt accessory jack (switched)
- 12 volt accessory jack (unswitched)
- Strobe beacon switch

Camera Display — Located on dash console

- Displays right side of machine
- Displays rear view

Cab Instrumentation — Ergonomically positioned analog instrumentation for driving including:

- Speedometer with odometer, hourmeter, trip odometer
- Front and rear air pressure with warning indicator
- Engine coolant temperature with warning indicator
- Engine oil pressure with warning indicator
- Voltage indicator with warning indicator
- Fuel level
- Tachometer
- Diesel exhaust fluid with warning indicator (EPA 2021 Engine Only)

Right Side Console — Controls and indicators for:

- Transmission gear shifting
- Transmission gear selector
- Transmission digital readout
- Cruise controls
- Engine compression brake controls

Dash Mounted Controls For:

- Carrier lights
- Carrier/upper throttle control
- Engine cooling fan override
- Cab heater/air conditioning
- Console dimmer switch
- Anti–lock brake diagnostic switch
- Diesel particulate filter switch (EPA 2021 Engine Only)
- Park brake
- Pick & carry switch
- Inter–axle differential lock switch
- Engine ignition
- Rear axle lift system switch — optional
- Diesel particulate filter regeneration inhibit switch (EPA 2021 Engine Only)

Dash Mounted Indicator For:

- Check, stop, and service engine
- Turn signal indication
- Park brake
- Cruise activation
- High beam headlights
- Check anti–lock brake system
- Check anti–lock trailer brake system
- Diesel particulate filter indication (EPA 2021 Engine Only)
- High exhaust temperature indication (EPA 2021 Engine Only)
- Regeneration inhibit (EPA 2021 Engine Only)
- Wait to start (EPA 2021 Engine Only)
- Malfunction indicator lamp (EPA 2021 Engine Only)
- Engine air filter high restriction

Steering Column Controls For:

- Warning horn
- Turn indicators
- High beam headlights
- Steering wheel adjustments
- Intermittent windshield wiper and washer
- Hazard lights

Foot Controls For:

- Carrier service brakes
- Engine throttle

■ Additional Equipment

Standard:

- Aluminum full deck fenders with mud flaps
- Left and right bubble levels
- Air hose connection ports
- Clearance flags

Optional:

- Pneumatic and electrical quick disconnect connectors mounted on the rear for trailer or boom dolly brakes and lights
- Left side aluminum storage box
- Rear mounted pintle hook
- Hook block storage on rear of carrier

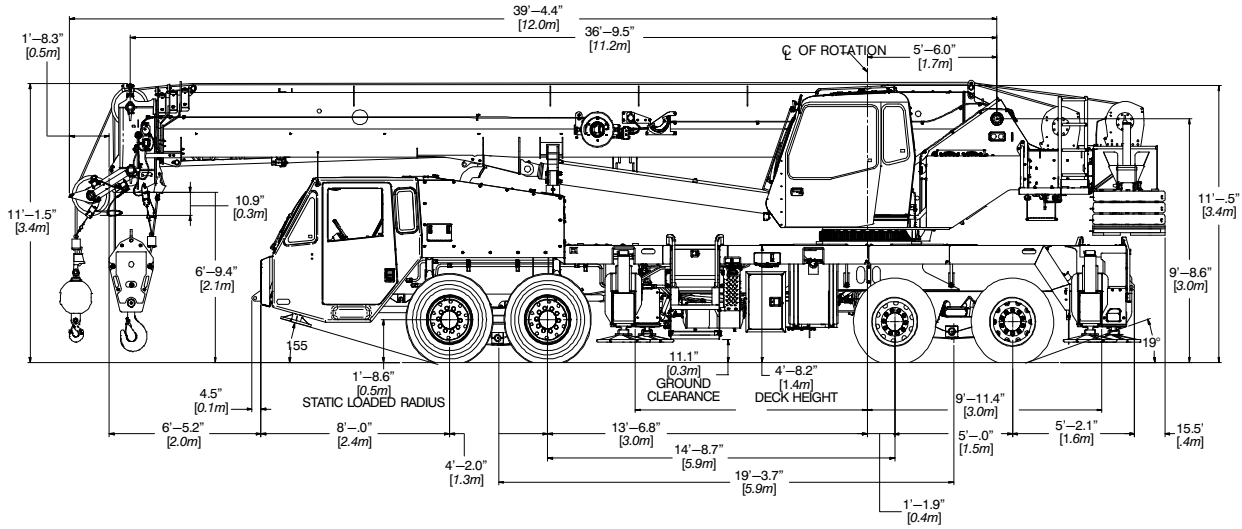
Axle Loads

Base crane with full tank of fuel and 4,300 lb (2.0t) counterweight		Gross Vehicle Weight ⁽¹⁾		Front Axles		Rear Axles	
		lb	kg	lb	kg	lb	kg
EPA 2021		64,882	29 425	29,600	13 424	35,282	16 001
Driver in carrier cab		250	113	328	149	-78	-35
Rear pintle hook		34	15	-13	-6	46	21
Pneumatic and electrical connectors for trailer or boom dolly		11	5	-4	-2	14	7
Carrier hookblock storage		375	170	-143	-65	518	235
Carrier aluminum storage box		66	30	20	9	46	21
Air ride lift system – rear axles		52	24	7	3	45	20
Ether injection		5	2	5	2	0	0
Hoist drum follower – main		75	34	-27	-12	102	46
Auxiliary winch with 450 ft of 5/8" type KC rope		385	174	-92	-42	477	216
Hoist drum follower – auxiliary		75	34	-16	-7	91	41
Substitute 450ft rope with 550ft rope – auxiliary		81	37	-19	-9	100	46
Remove 550 ft of rope from rear (main) winch		-446	-202	169	77	-615	-279
Remove 450 ft of rope from front (auxiliary) winch		-365	-165	87	39	-452	-205
Air conditioning – operator		319	145	8	4	311	141
360° mechanical swing lock		60	27	6	3	54	24
One 3,600 lbs slab of counterweight on upper		3,582	1 624	-1 375	-624	4,957	2 248
Two 3,600 lb slabs of counterweight on upper		7,164	3 249	-2 750	-1,247	9,914	4 496
Three 3,600 lbs slabs of counterweight on upper		10,746	4 873	-4 125	-1,871	14,871	6 744
Four 3,600 lb slabs of counterweight on upper		14,328	6 498	-5 500	-2,494	19,828	8 992
One 3,600 lbs slab of counterweight on carrier		3,582	1 624	2 716	1,232	866	393
Two 3,600 lb slabs of counterweight on carrier		7,164	3 249	5 432	2,464	1,732	785
Three 3,600 lbs slabs of counterweight on carrier		10,746	4 873	8 148	3,695	2,598	1 178
Four 3,600 lbs slabs of counterweight on carrier		14,328	6 498	10 864	4 927	3 464	1 571
Floodlight to the front of boom base section		10	5	16	7	-6	-3
Fly mounting brackets to boom base section for fly options		95	43	95	43	0	0
28.5 ft offsettable, one-piece (bi-fold) lattice fly – stowed		1,238	562	1 393	632	-154	-70
28.5–51 ft offsettable, two-piece (bi-fold) lattice fly – stowed		1,830	830	1 928	875	-99	-45
Auxiliary lifting sheave *		91	41	165	75	-74	-34
41 ton 3-sheave hook block at boom head *		800	363	1 447	656	-647	-294
60 ton 5-sheave hook block at boom head *		1,100	499	1 990	902	-890	-404
8 ton hook ball at boom head *		320	145	579	263	-259	-117
Counterweight Load Transfer		Front Axles		Rear Axles			
		lb	kg	lb	kg		
Transfer one 3,600lb (1.6t) slab of counterweight to carrier deck		4,091	1 856	-4,091	-1 856		
Transfer two 3,600lb (1.6t) slabs of counterweight to carrier deck		8,182	3 711	-8,182	-3 711		
Transfer three 3,600lb (1.6t) slabs of counterweight to carrier deck		12,273	5 567	-12,273	-5 567		
Axle	Maximum Load @ 65 mph (105km/h)						
Front	45,400 lb (20 593kg) – aluminum disc wheels with 425/65R22.5 tires						
Rear	47,250 lb (21 432kg) – aluminum disc wheels with 11R22.5 tires						

(1) Adjust gross vehicle weight and axle loading according to component weight. All weights are ±3%.

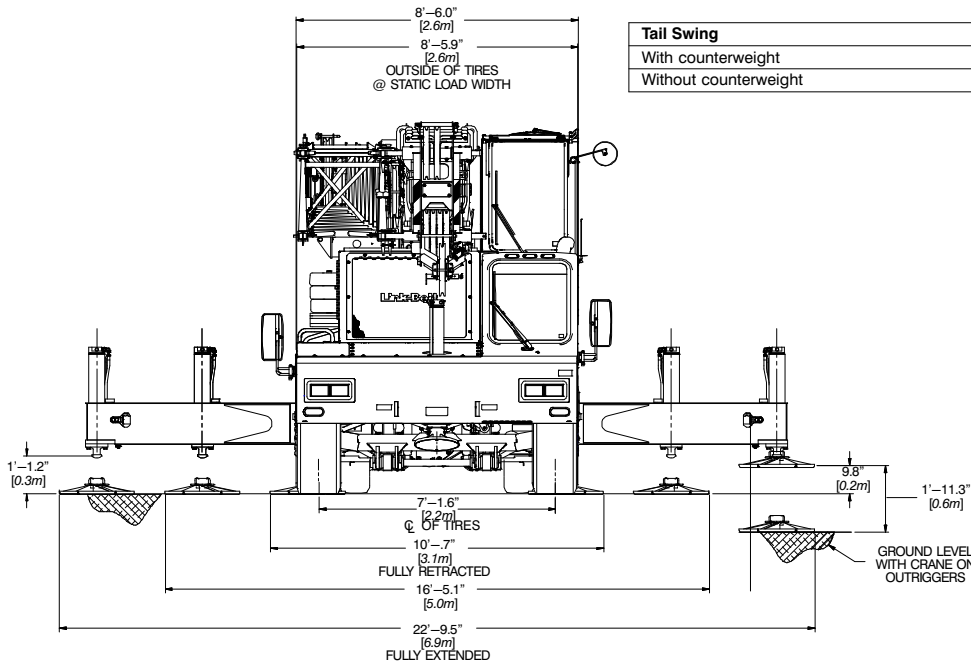
General Dimensions

■ EPA 2021

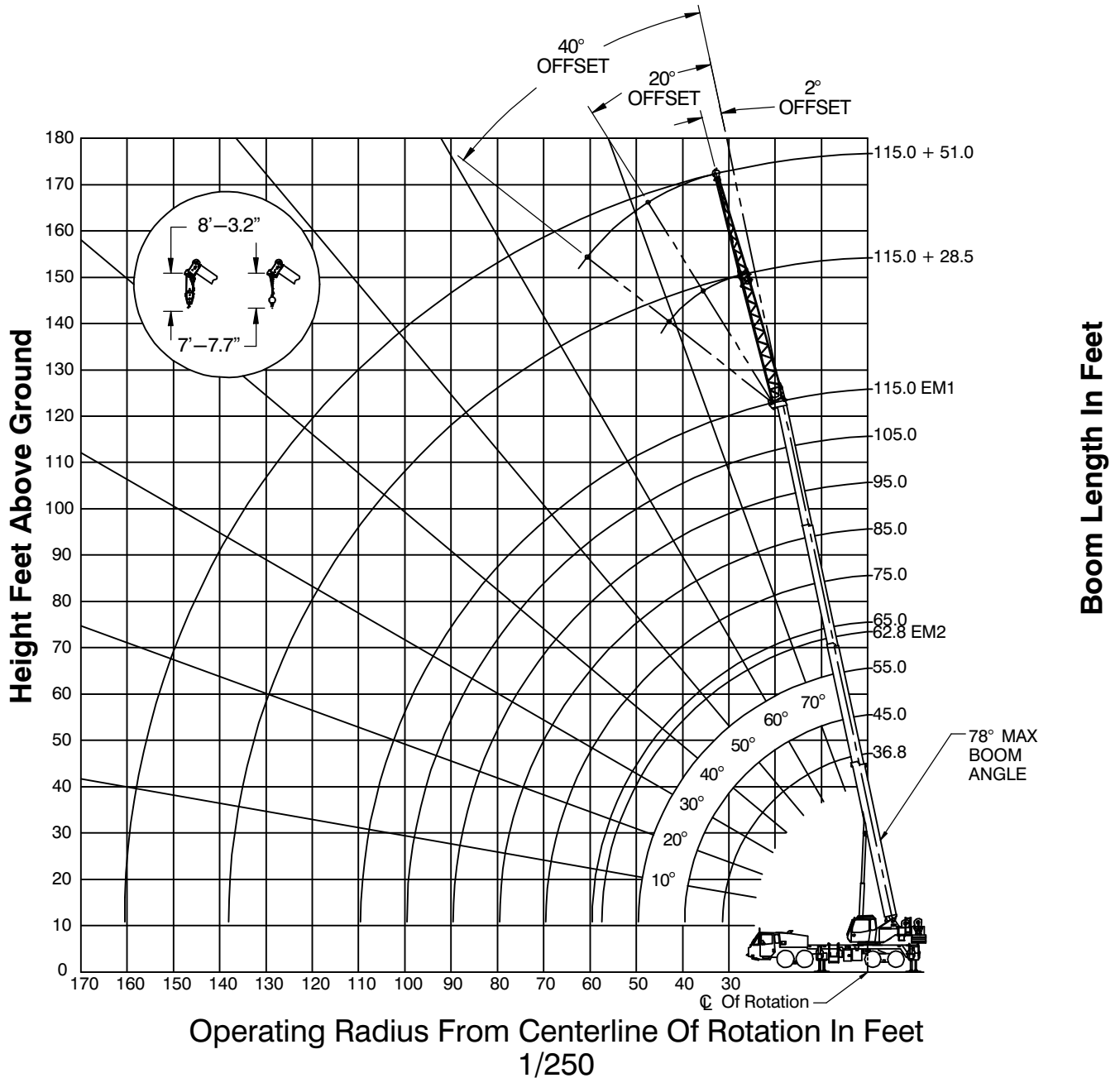


Turning Radius	English	Metric
Wall to wall over carrier	44' 1"	13.4m
Wall to wall over boom	45' 6"	13.9m
Wall to wall over boom attachment	46' 11"	14.3m
Centerline of tire	38' 7"	11.8m

Tail Swing	English	Metric
With counterweight	12' 8.5"	3.9m
Without counterweight	12' 5.25"	3.8m



Working Range Diagram



Note: Boom and fly geometry shown are for unloaded condition and crane standing level on firm supporting surface. Boom deflection, subsequent radius, and boom angle change must be accounted for when applying load to hook.



WARNING

Do Not Lower The Boom Below The Minimum Boom Angle For No Load Stability As Shown In The Lift Charts For The Boom Lengths Given. Loss Of Stability Will Occur Causing A Tipping Condition.

Boom Extend Modes

Boom Length		Boom Mode		
ft	m	T3	T2	T1
36.75	11.20			
45	13.72	11%	11%	11%
55	16.76	23%	23%	23%
65	19.81	36%	36%	36%
75	22.86	49%	49%	49%
85	25.91	62%	62%	62%
95	28.96	74%	74%	74%
105	32.00	87%	87%	87%
115	35.05	100%	100%	100%

EM
1

Boom Length		Boom Mode		
ft	m	T3	T2	T1
36.75	11.20			
45	13.72			32%
55	16.76			70%
62.83	19.15			100%

EM
2

Main Boom Lift Capacity Charts – Standard

11,500 lb Counterweight – Fully Extended Outriggers – 360° Rotation (All Capacities Are Listed In Pounds)

Radius (ft)	Boom Length (ft)								Radius (ft)	
	36.75	45	55	62.8-65	75	85	95	105		115
10	99,400	83,700	82,200							10
12	89,100	83,700	78,900	66,100						12
15	71,900	71,600	68,300	59,100	39,200					15
20	52,300	52,100	51,900	50,000	39,200	36,300	32,100			20
25	40,200	40,400	40,000	39,900	39,200	31,400	28,000	25,500		25
30	29,200	30,300	30,900	31,300	31,500	27,700	24,700	22,400	20,700	30
35		22,600	23,300	23,600	23,800	24,000	21,900	20,000	18,500	35
40			18,200	18,600	18,800	18,900	19,100	17,900	16,600	40
45			14,500	14,900	15,200	15,300	15,400	15,500	15,000	45
50				12,100	12,500	12,600	12,700	12,800	12,800	50
55				10,000	10,300	10,500	10,700	10,700	10,700	55
60					8,600	8,800	9,000	9,000	9,100	60
65					7,200	7,400	7,600	7,700	7,700	65
70						6,200	6,400	6,500	6,600	70
75						5,200	5,400	5,500	5,600	75
80							4,500	4,700	4,800	80
85							3,800	3,900	4,000	85
90								3,300	3,400	90
95								2,700	2,800	95
100									2,300	100
105									1,800	105

* Special Conditions Or Wire Rope Required

Main Boom Lift Capacity Charts – Optional

15,100 lb Counterweight – Fully Extended Outriggers – 360° Rotation (All Capacities Are Listed In Pounds)											
Radius (ft)	Boom Length (ft)									Radius (ft)	
	36.75	45	55	62.8-65	75	85	95	105	115		
7	130,000*										7
8	108,400										8
10	99,400	83,700	82,200								10
12	89,100	83,700	78,900	66,100							12
15	74,200	73,100	68,300	59,100	39,200						15
20	54,100	53,900	53,700	50,000	39,200	36,300	32,100				20
25	41,700	41,600	41,400	41,300	39,200	31,400	28,000	25,500			25
30	32,500	33,600	34,200	34,500	34,700	27,700	24,700	22,400	20,700		30
35		25,200	25,900	26,200	26,400	24,600	21,900	20,000	18,500		35
40			20,300	20,800	21,000	21,100	19,700	17,900	16,600		40
45			16,300	16,800	17,000	17,200	17,300	16,200	15,000		45
50				13,800	14,100	14,200	14,300	14,400	13,600		50
55				11,400	11,700	11,900	12,000	12,100	12,200		55
60					9,900	10,100	10,300	10,300	10,400		60
65					8,300	8,600	8,800	8,800	8,900		65
70						7,300	7,500	7,600	7,700		70
75						6,200	6,400	6,500	6,600		75
80							5,500	5,600	5,700		80
85							4,600	4,800	4,900		85
90								4,100	4,200		90
95								3,400	3,600		95
100									3,000		100
105									2,500		105

* Special Conditions Or Wire Rope Required

Main Boom Lift Capacity Charts – Optional

18,700 lb Counterweight – Fully Extended Outriggers – 360° Rotation (All Capacities Are Listed In Pounds)										
Radius (ft)	Boom Length (ft)									Radius (ft)
	36.75	45	55	62.8-65	75	85	95	105	115	
7	130,000*									7
8	108,400									8
10	99,400	83,700	82,200							10
12	89,100	83,700	78,900	66,100						12
15	76,500	73,100	68,300	59,100	39,200					15
20	55,800	55,600	55,400	50,000	39,200	36,300	32,100			20
25	43,100	43,000	42,800	42,700	39,200	31,400	28,000	25,500		25
30	34,400	35,200	35,800	36,100	36,300	27,700	24,700	22,400	20,700	30
35		27,800	28,600	28,900	29,100	24,600	21,900	20,000	18,500	35
40			22,500	22,900	23,100	22,100	19,700	17,900	16,600	40
45			18,200	18,700	18,900	19,000	17,800	16,200	15,000	45
50				15,400	15,700	15,900	16,000	14,700	13,600	50
55				12,900	13,200	13,400	13,500	13,400	12,300	55
60					11,200	11,400	11,500	11,600	11,300	60
65					9,500	9,800	9,900	10,000	10,100	65
70						8,400	8,600	8,700	8,700	70
75						7,200	7,400	7,500	7,600	75
80							6,400	6,500	6,600	80
85							5,500	5,600	5,800	85
90								4,900	5,000	90
95								4,200	4,300	95
100									3,700	100
105									3,200	105

* Special Conditions Or Wire Rope Required

This information is not for crane operation. Operator must refer to the in-cab information for crane operation. Rated lifting capacities shown on fully extended outriggers do not exceed 85% of the tipping loads and on tires do not exceed 75% of the tipping loads.

Fly Attachment Lift Capacity Charts – Optional

11,500 lb Counterweight – Fully Extended Outriggers – 360° Rotation (All Capacities Are Listed In Pounds)								
115 ft Main Boom Length 2° Fly Offset			115 ft Main Boom Length 20° Fly Offset			115 ft Main Boom Length 40° Fly Offset		
Radius (ft)	Fly Length (ft)		Radius (ft)	Fly Length (ft)		Radius (ft)	Fly Length (ft)	
	28.5	51		28.5	51		28.5	51
30	11,400		30			30		
35	11,400	7,400	35	11,900		35		
40	11,400	7,400	40	11,900		40		
45	11,400	7,400	45	11,700		45	9,400	
50	11,400	7,400	50	11,200	6,700	50	9,100	
55	11,000	7,400	55	10,800	6,400	55	8,800	
60	9,700	7,400	60	9,900	6,100	60	8,500	4,200
65	8,200	7,400	65	8,900	5,800	65	8,300	4,000
70	7,100	7,400	70	7,700	5,500	70	8,100	3,900
75	6,100	6,600	75	6,600	5,300	75	7,100	3,800
80	5,200	5,700	80	5,700	5,100	80	6,100	3,700
85	4,500	5,000	85	4,900	4,900	85	5,300	3,600
90	3,800	4,300	90	4,200	4,700	90	4,500	3,500
95	3,300	3,700	95	3,600	4,400	95	3,900	3,400
100	2,800	3,200	100	3,100	3,800	100	3,300	3,300
105	2,300	2,700	105	2,600	3,300	105	2,800	3,300
110	1,900	2,300	110	2,100	2,800	110	2,300	3,200
115	1,500	2,000	115	1,700	2,400	115	1,800	2,800
120	1,200	1,600	120	1,400	2,000	120		2,300
125	900	1,300	125	1,000	1,700	125		1,900
130		1,000	130		1,400	130		1,600
135			135		1,000	135		1,200
140			140			140		900

This information is not for crane operation. Operator must refer to the in-cab information for crane operation. Rated lifting capacities shown on fully extended outriggers do not exceed 85% of the tipping loads and on tires do not exceed 75% of the tipping loads.

15,100 lb Counterweight – Fully Extended Outriggers – 360° Rotation (All Capacities Are Listed In Pounds)								
115 ft Main Boom Length 2° Fly Offset			115 ft Main Boom Length 20° Fly Offset			115 ft Main Boom Length 40° Fly Offset		
Radius (ft)	Fly Length (ft)		Radius (ft)	Fly Length (ft)		Radius (ft)	Fly Length (ft)	
	28.5	51		28.5	51		28.5	51
30	11,400		30			30		
35	11,400	7,400	35	11,900		35		
40	11,400	7,400	40	11,900		40		
45	11,400	7,400	45	11,700		45	9,400	
50	11,400	7,400	50	11,200	6,700	50	9,100	
55	11,000	7,400	55	10,800	6,400	55	8,800	
60	10,000	7,400	60	9,900	6,100	60	8,500	4,200
65	9,100	7,400	65	9,100	5,800	65	8,300	4,000
70	8,100	7,400	70	8,400	5,500	70	8,100	3,900
75	7,100	7,300	75	7,600	5,300	75	7,700	3,800
80	6,100	6,600	80	6,600	5,100	80	7,000	3,700
85	5,300	5,800	85	5,800	4,900	85	6,100	3,600
90	4,600	5,100	90	5,000	4,700	90	5,300	3,500
95	4,000	4,500	95	4,400	4,500	95	4,600	3,400
100	3,500	3,900	100	3,800	4,300	100	4,000	3,300
105	3,000	3,400	105	3,300	4,000	105	3,400	3,300
110	2,600	3,000	110	2,800	3,500	110	2,900	3,200
115	2,200	2,600	115	2,400	3,000	115	2,500	3,200
120	1,800	2,200	120	2,000	2,600	120		2,900
125	1,500	1,900	125	1,600	2,200	125		2,500
130	1,200	1,600	130	1,200	1,900	130		2,100
135		1,300	135		1,600	135		1,700
140		1,000	140		1,300	140		1,400
145			145		1,000	145		

18,700 lb Counterweight – Fully Extended Outriggers – 360° Rotation (All Capacities Are Listed In Pounds)								
115 ft Main Boom Length 2° Fly Offset			115 ft Main Boom Length 20° Fly Offset			115 ft Main Boom Length 40° Fly Offset		
Radius (ft)	Fly Length (ft)		Radius (ft)	Fly Length (ft)		Radius (ft)	Fly Length (ft)	
	28.5	51		28.5	51		28.5	51
30	11,400		30			30		
35	11,400	7,400	35	11,900		35		
40	11,400	7,400	40	11,900		40		
45	11,400	7,400	45	11,700		45	9,400	
50	11,400	7,400	50	11,200	6,700	50	9,100	
55	11,000	7,400	55	10,800	6,400	55	8,800	
60	10,000	7,400	60	9,900	6,100	60	8,500	4,200
65	9,100	7,400	65	9,100	5,800	65	8,300	4,000
70	8,400	7,400	70	8,400	5,500	70	8,100	3,900
75	7,700	7,300	75	7,700	5,300	75	7,700	3,800
80	7,100	6,700	80	7,100	5,100	80	7,200	3,700
85	6,200	6,200	85	6,600	4,900	85	6,600	3,600
90	5,500	5,700	90	5,900	4,700	90	6,100	3,500
95	4,800	5,300	95	5,100	4,500	95	5,400	3,400
100	4,200	4,700	100	4,500	4,300	100	4,700	3,300
105	3,700	4,100	105	4,000	4,200	105	4,100	3,300
110	3,200	3,600	110	3,400	4,000	110	3,600	3,200
115	2,800	3,200	115	3,000	3,700	115	3,100	3,200
120	2,400	2,800	120	2,600	3,200	120		3,100
125	2,000	2,400	125	2,200	2,800	125		3,100
130	1,700	2,100	130	1,800	2,400	130		2,600
135	1,400	1,800	135		2,100	135		2,200
140		1,500	140		1,800	140		1,900
145		1,300	145		1,500	145		
150		1,000	150		1,200	150		

This information is not for crane operation. Operator must refer to the in-cab information for crane operation. Rated lifting capacities shown on fully extended outriggers do not exceed 75% of the tipping loads and on tires do not exceed 65% of the tipping loads.

This page intentionally left blank

This page intentionally left blank

This page intentionally left blank

Link-Belt Cranes Lexington, Kentucky www.linkbelt.com

®Link-Belt is a registered trademark. Copyright 2021. We are constantly improving our products and therefore reserve the right to change designs and specifications.