

Link-Belt®
C R A N E S

CRANE GUIDE

NORTH AMERICAN



Measure the Link-Belt difference.

Link-Belt's 815,000 sq. ft. (75 716 sq. m²) manufacturing facility in Lexington, Kentucky

We are a financially strong, progressive company with cutting edge technology that designs, manufactures, sells and supports world class cranes for our highly valued customers.

Operations

A dynamic and highly-focused, wholly-owned subsidiary of Sumitomo Heavy Industries, Link-Belt is a market leader in crane design and product quality standards. Millions of dollars have been committed to a company-wide "lean manufacturing" philosophy, modeled after Toyota's lean production system. The operating principles of SQCDE (safety, quality, cost, delivery, environment) are adhered to in every aspect of the company.

Human factor

The essence of Link-Belt is our people, a family of motivated professionals passionate about quality and innovation. Great cranes are just one of our many byproducts. With over 140 years of experience, our work is an unrelenting search for improvement. Our employees deliver their heart and soul to you with every Link-Belt crane.

For advice and ideas, our engineers turn to you, our customers. Then, in a state-of-the-art facility relentlessly evolving efficiencies, those ideas develop into cranes that dominate the market and build the world: customers, engineers and crane builders in perfect harmony.



State-of-the-art

Over the last decade, Link-Belt has invested \$73 million (USD) in factory expansions and manufacturing upgrades. A state-of-the-art formed boom production facility, boom painting system, boom assembly bay, and a universal machining center bring increased manufacturing capacity, along with total quality and delivery control for these processes. A 30,000 square foot training and quality assurance center opened its doors in January 2016. The training facility serves Link-Belt distributors, crane owners, and employees.

ISO 9001 / ISO 14001

Link-Belt operates on the principles of continuous quality improvement, ISO 9001, and established values that support the vision of quality, resulting in reduction of waste, better use of company resources and improved employee and customer satisfaction. The Link-Belt Environmental Management System has been validated with ISO 14001 Certification. The International Organization for Standardization issues this certification as a framework to assist organizations in developing their own environmental management system.

Value

It takes more than just a crane. It takes answers, even at midnight, wherever you are. Link-Belt Preferred delivers around-the-clock availability. Find 3D eManuals and specifications online for almost every Link-Belt crane. Calculate ground bearing pressure or view part diagrams – it's all there. Need a complete lift plan? 3DLiftPlan.com is quick and easy and Link-Belt provides free access for all our 3D cranes to be used. But Link-Belt Preferred is more than just websites. It is value. It spans comprehensive product training and support personnel with their hands on your crane. Best of all, Link-Belt Preferred comes standard with every Link-Belt crane.

Link-Belt *Preferred*



Support

Link-Belt dealers are some of the finest on the globe. With long-term financial strength, they are ready to take on your challenges and furnish the know-how that keeps your cranes ready to work. These dealers are not isolated either. Link-Belt has dedicated full time regional service technicians and factory technical advisors available to maximize up-time for your cranes. In addition, our dedicated 815,000 sq. ft (75 716 sq. m²) Parts Distribution Center is an integral part of the Link-Belt product support commitment. Count on the right parts and the right people when and where you need them.

Only forward

Link-Belt has not slowed down but has continued to strengthen ourselves for the future. Well, the future is here and we're stronger and more confident than ever. We continue to develop significant new products, and add manufacturing capabilities to control our destiny. These investments flow directly to you, our customer, as cutting-edge cranes with superior support.

Link-Belt is ready to move, meeting your challenges and supporting your success.



Rough Terrain Cranes



	Capacity	Boom Sections & Length	Boom Type	Optional Boom Attachments	Maximum Tip Height
	US t (mt)	ft (m)		ft (m)	ft (m)
RTC-8065 Series II	65 (60)	4-Section 38 - 115 (11.6 - 35.0)	Full Power	35 - 58 (10.7 - 17.7) two-piece offsettable fly Two 16 (4.9) extensions	211.6 (64.5)
75 RT	75 (70)	5-Section 38 - 142 (11.6 - 43.3)		35-58 (10.7-17.7) two-piece offsettable fly 10-35-58 (3.0-10.7-17.7) three-piece offsettable fly	208.7 (63.6)
85 RT	85 (80)	5-Section 38 - 142 (11.6 - 43.3)		35 - 58 (10.7 - 17.7) two-piece offsettable SmartFly	209.1 (63.7)
100 RT	100 (90)	5-Section 40.6 - 155 (12.3 - 47.2)		35 - 58 (10.7 - 17.7) two-piece bi-fold offsettable SmartFly One 16 (4.9) lattice boom extension	237 (72.3)
120 RT	120 (110)	6-Section 38 - 164.1 (11.5 - 50)	Pin & Latch	35-58 (10.7-17.7) two-piece bi-fold offsettable SmartFly Two 16 (4.9) lattice boom extensions	262 (79.7)
RTC-80130 Series II	130 (120)	5-Section 41.4 - 162 (12.6 - 49.3)		31 - 55 (9.4 - 16.8) two-piece offsettable fly 10 - 31 - 55 (3.0 - 9.4 - 16.8) three piece offsettable fly Three 18 (5.5) lattice boom extensions	278 (84.7)
RTC-80160 Series II	160 (145)	6-Section 42.3 - 195.3 (12.9 - 59.5)		31 - 55 (9.4 - 16.8) two-piece offsettable fly 10 - 31 - 55 (3.0 - 9.4 - 16.8) three piece offsettable fly Three 18 (5.5) lattice boom extensions	311 (94.8)

Telescopic Crawler Cranes



	Capacity	Operating Weight	Boom Length	Boom Type	Gradeability	Transport Dimensions	Track Gauge & Length
	US t (mt)	lb (kg)	ft (m)			ft (m)	ft (m)
TCC-550	55 (50)	109,850 (45 291) w/o XL	4-Section 36 - 115 (11.2 - 35.01)	Full Power	40%	H: 10.3 (3.1) W: 11.4 (3.5) L: 46.7 (14.23)	Extended Gauge: 12.7 (3.8) Intermediate Gauge: 10.9 (3.3) Retracted Gauge: 8.9 (2.7) Track Length: 19.5 (6.0)
TCC-800 C€	80 (75)	144,400 (65 499)	4-Section 38.6 - 120 (11.8 - 36.6)			H: 11.5 (3.4) W: 11.4 (3.5) L: 48.6 (14.87)	Extended Gauge: 14.0 (4.3) Intermediate Gauge: 11.9 (3.6) Retracted Gauge: 8.4 (2.6) Track Length: 21.1 (6.3)
TCC-1200 C€	120 (110)	223,000 (101 151)	5-Section 40 - 150 (12.2 - 45.7)			H: 9.8 (3.0) W: 10.5 (3.2) L: 50.0(15.1)	Extended Gauge: 15.2 (4.6) Intermediate Gauge: 12.7 (3.9) Retracted Gauge: 8.9 (2.7) Track Length: 23.3 (7.1)
TCC-1400 C€	140 (127)	233,300 (105 823)	6-Section 42.4 - 195.4 (12.9 - 59.5)	H: 9.8 (3.0) W: 10.5 (3.2) L: 52.8 (16.1)			
TCC-2500	250 (230)	401,985 (182 337)	7-Section 43.7 – 223 (13.3 – 68)	Pin & Latch		H: 9.8 (3.0) W: 11.4 (3.5) L: 54.8 (16.7)	Track Gauge: 20.3 (6.2) Track Length: 28.8 (8.8)

Telescopic Truck Cranes



	Capacity	Boom Sections & Length	Boom Type	Optional Boom Attachments	Maximum Tip Height
	US t (mt)	ft (m)		ft (m)	ft (m)
HTC-8660* Series II	60 (50)	4-Section 35.5 - 110 (10.8 - 33.5)	Full Power	28.5 - 51 (8.7 - 15.5) two-piece offsettable fly	167 (50.9)
65 HT EPA & CARB compliant engine package	65 (55)	4-Section 36.75 - 115 (11.2 - 36)		28.5 - 51 (8.7 - 15.5) two-piece offsettable fly	171 (52.2)
HTC-8675 Series II EPA & CARB compliant engine package	75 (70)	4-Section 41 - 127 (12.5 - 38.7)	Pin & Latch	38 - 64 (11.6 - 19.5) two-piece offsettable fly	199 (60.7)
				Two 16 (4.9) extensions plus 64 (19.5) two-piece offsettable fly	230 (70.1)
HTC-86100 EPA & CARB compliant engine package	100 (85)	5-Section 38 - 140 (11.6 - 42.7)		35 - 58 (10.7 - 17.7) two-piece offsettable fly	205 (62.5)
				Two 16 (4.9) extensions plus 58 (17.7) two-piece offsettable fly	237 (72.2)
HTC-86110 EPA & CARB compliant engine package	110 (100)	6-Section 38.3 - 164.1 (11.7 - 50)		10 - 35 - 58 (3.0 - 10.7 - 17.7) three-piece offsettable SmartFly	230 (70.3)
				Two 16 (4.9) extensions plus 58 (17.7) offsettable SmartFly	262 (79.7)
120 HT EPA & CARB compliant engine package	120 (110)	6-Section 38.3 - 164.1 (11.7 - 50)		35 - 38 (10.7 - 11.6) two-piece offsettable SmartFly 9.5- 35 - 58 (2.9 - 10.7 - 17.7) three-piece offsettable SmartFly Two 16 (4.9) extensions plus 58 (17.7) offsettable SmartFly	262 (79.9)
120 HT LB EPA & CARB compliant engine package	120 (110)	7-Section 39.8 - 196.8 (12 - 59.9)		9.5 - 35 - 58 (2.9-10.7-17.7) Three-piece offsettable fly 35- 58 (10.8-17.8) offsettable fly	230 (70.3) 263 (80.2)

* Export Only, Tier 3 Engine Only

Truck Terrain Cranes



	Capacity	Boom Sections & Length	Boom Type	Optional Boom Attachments	Maximum Tip Height
	US t (mt)	ft (m)		ft (m)	ft (m)
HTT-8675 Series II EPA & CARB compliant engine package	75 (70)	4-Section 41 - 127 (12.5 - 38.7)	Pin & Latch	38 - 64 (11.6 - 19.5) two-piece offsettable fly	199 (60.7)
				Two 16 (4.9) extensions plus 64 (19.5) two-piece offsettable fly	230 (70.2)
HTT-86100 EPA & CARB compliant engine package	100 (85)	5-Section 38 - 140 (11.6 - 42.7)		35 - 58 (10.7 - 17.7) two-piece offsettable fly	205 (62.5)
				Two 16 (4.9) extensions plus 58 (17.7) two-piece offsettable fly	237 (72.2)
HTT-86110 EPA & CARB compliant engine package	110 (100)	6-Section 38.3 - 164.1 (11.7 - 50)		10 - 35 - 58 (3.0 - 10.7 - 17.7) three-piece offsettable fly	230(70.3)
				Two 16 (4.9) extensions plus 58 (17.7) offsettable fly	262 (79.7)
120 TT EPA & CARB compliant engine package	120 (110)	6-Section 38.3 - 164.1 (11.7 - 50)		35 - 38 (10.7 - 11.6) two-piece offsettable SmartFly 9.5- 35 - 58 (2.9 - 10.7 - 17.7) three-piece offsettable SmartFly Two 16 (4.9) extensions plus 58 (17.7) offsettable SmartFly	230 (70.3) 262 (79.7)

Lattice Crawler Cranes



	Capacity	Crane Operating Weight	Boom Type & Length	Maximum Boom & Jib Combinations	Maximum Luffing Attachment Length	Track Extended Gauge & Length
	US t (mt)	lb (kg)	ft (m)	ft (m)	ft (m)	ft (m)
138 HSL ■	80 (73)	145,403 (65 954)	Tube: 40 - 200 (12.2 - 61)	180 + 60 (54.9 + 18.3)	N/A	Extended Gauge: 14 (4.3) Length: 20.2 (6.2)
		146,743 (66 561)	Angle: 40 - 150 (12.2 - 45.7)	140 + 60 (45.7 + 18.3)		
218 V ■	110 (100)	203,728 (92 409)	Tube: 40 - 230 (12.2 - 70.1)	200 + 75 (61 + 22.9)	N/A	Extended Gauge: 14.2 (4.3) Length: 20.5 (6.3)
228 HSL ■	130 (118)	235,041 (106 614)	Tube: 45 - 235 (13.7 - 71.7)	205 + 75 (62.5 + 22.9)	N/A	Extended Gauge: 14.5 (4.4) Length: 21 (6.4)
			Angle: 45 - 155 (13.7 - 47.2)	-		
238 HSL ■	150 (136)	262,677 (119 148)	Tube: 50 - 260 (15.2 - 79.3)	230 + 80 (70.1 + 24.4)	Luffing Boom: 165 (50.3) Luffing Jib: 160 (48.8) Fixed Jib: 30 (9.1)	Gauge: 17.7 (5.4) Length: 25.9 (7.9)
248 HSL ■	200 (181)	349,711 (158 626)	Tube: 55 - 285 (16.8 - 86.9)	245 + 100 (74.7 + 30.5)	Luffing Boom: 150 (45.7) Luffing Jib: 180 (54.9) Fixed Jib: 30 (9.1)	Gauge: 17.7 (5.4) Length: 27.4 (8.4)
298 Series 2 ■	250 (227)	416,538 (188 938)	Tube: 60 - 290 (18.3 - 88.4)	250 + 90 (76.2 + 27.4)	Luffing Boom: 190 (57.9) Luffing Jib: 195 (59.4)	Gauge: 19.3 (5.9) Length: 27.8 (8.4)
348 Series 2 ■	300 (272)	516,178 (234 134)	Heavy Duty: 70 - 300 (21.3 - 91.4)	240 + 140 (73.1 + 42.7)	Luffing Boom: 180+240 (54.9 + 73.2)	Ext. Gauge: 22 (6.7) Ret. Ext. Gauge: 19.2 (5.8) Length: 30.5 (9.4)
			Long Range: 85 - 355 (25.9 - 108.2)	275 + 140 (83.8 + 42.7)	Luffing Jib: 160+210+80 (48.8+64+24.4)	

■ Sold in North America, South America, Caribbean, Central America only

All Terrain Cranes



	Capacity	Boom Sections & Length	Boom Type	Optional Boom Attachments	Maximum Tip Height
	US t (mt)	ft (m)		ft (m)	ft (m)
175 AT EPA/CARB compliant engine package	175 (150)	6-Section 42.7 - 197.3 (13 - 60.1)	Pin & Latch	10 - 32 - 55 (3 - 9.9 - 16.8) Three-piece offsettable fly Three 18' (5.5) extensions plus 55' (16.8) offsettable fly	261.9 (79.8) 315.1 (96.1)
ATC-3210 EPA/CARB compliant engine package Tier-4 upper engine	210 (185)	6-Section 44.3 - 200.1 (13.5 - 61.1)		12 - 40 - 67 (3.6 - 12.2 - 20.4) three-piece offsettable fly Two 25 (7.6) extensions plus 67 (20.4) offsettable fly	277.3 (84.5) 326.7 (99.6)
ATC-3275 EPA/CARB compliant engine package Tier-4 upper engine	275 (250)	7-Section 43.7 - 223 (13.3 - 68)		12 - 40 - 67 (3.6 - 12.2 - 20.4) three-piece offsettable fly Two 25 (7.6) extensions plus 67 (20.4) offsettable fly	301 (91.7) 350 (106.7)
300 AT EPA/CARB compliant engine package	300 (250)	7-Section 46- 238 (14 - 72.5m)		42 - 71 (12.8 - 21.6) 2 piece offsettable fly Two 25 (7.6) extensions plus 71 (21.6) offsettable fly	322 (98.1) 369 (112.5)

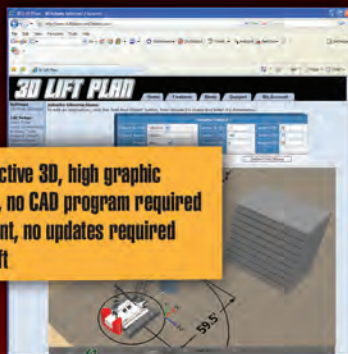
www.linkbelt.com

Link-Belt[®] 24/7 Preferred

The online answer to all of your Link-Belt Crane questions.

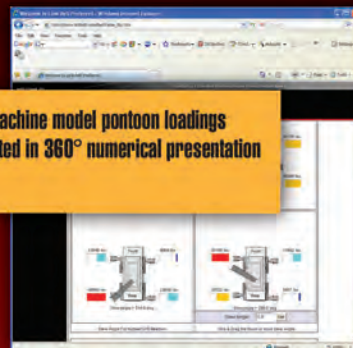
3D LIFT PLANNING

- ◆ Web-based, active 3D, high graphic
- ◆ User-friendly, no CAD program required
- ◆ Always current, no updates required
- ◆ Print actual lift



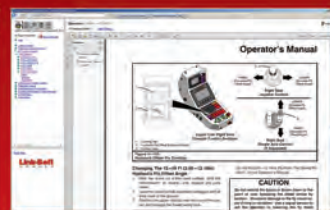
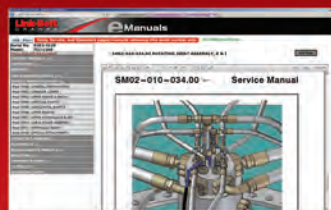
GROUND BEARING PRESSURES

- ◆ Dynamic specific machine model pontoon loadings
- ◆ Graphically illustrated in 360° numerical presentation
- ◆ Print out



ALL CRANE TECHNICAL INFORMATION

- ◆ Interactive parts pages in 3D
- ◆ Operations manuals for 300+ models
- ◆ Service manuals, schematics & more...



COMPREHENSIVE TELEMATICS SUPPORT

- ◆ New: TeleTrax app for Android & I-phone
- ◆ Quick access to fleet location
- ◆ Customized alerts & notifications delivered how and when you want them!



AND MORE!!

- Factory-trained distributor support
- Experienced factory technicians
- 24/7 parts distribution with 95% availability
- Factory parts customer service reps
- Link-Belt certified structural repair
- Boom inspection
- Online manuals:
 - Operator manuals
 - Service manuals
 - Parts pages
- Literature archive

Sign up today at
www.linkbelt.com



Lexington, Kentucky | www.linkbelt.com

© Link-Belt is a registered trademark. Copyright 2023.
All rights reserved. We are constantly improving our products and
therefore reserve the right to change designs and specifications.

Made in the U.S.A. 4297 1/28/23 #4588 (supersedes #4582)